



Choctaw Public Health Services

Healthy Community, Healthy Culture

Public Health Accreditation Committee



Accreditation Readiness Assessment

- Gave the program a gauge of progress and what is needed to get ready of accreditation.
- Highlighted the pre-scores of 6 dimensions from highest and lowest scores.
- Allowed for the program to review and strengthen key areas.

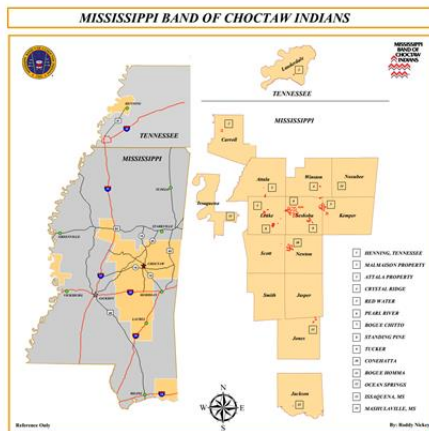


Choctaw Health Center

Pearl River Reservation is now home to a new state-of-the-art health facility. The newly completed Choctaw Health Center encompasses a 36-room outpatient department, a 18-chair dental department, six treatment rooms (two equipped for trauma), an emergency department, emergency medical services, various treatment facilities behavioral health and public health services, along with all necessary support services.

Purpose:

In support of the Choctaw Health Center's mission, the Public Health Services Department's purpose is to enable members of the MBCI to achieve optimal health by improving each individual's knowledge; attitudes, and practices about health by promoting, supporting, and assisting the Choctaw Health Center with Health care delivery at the community level.

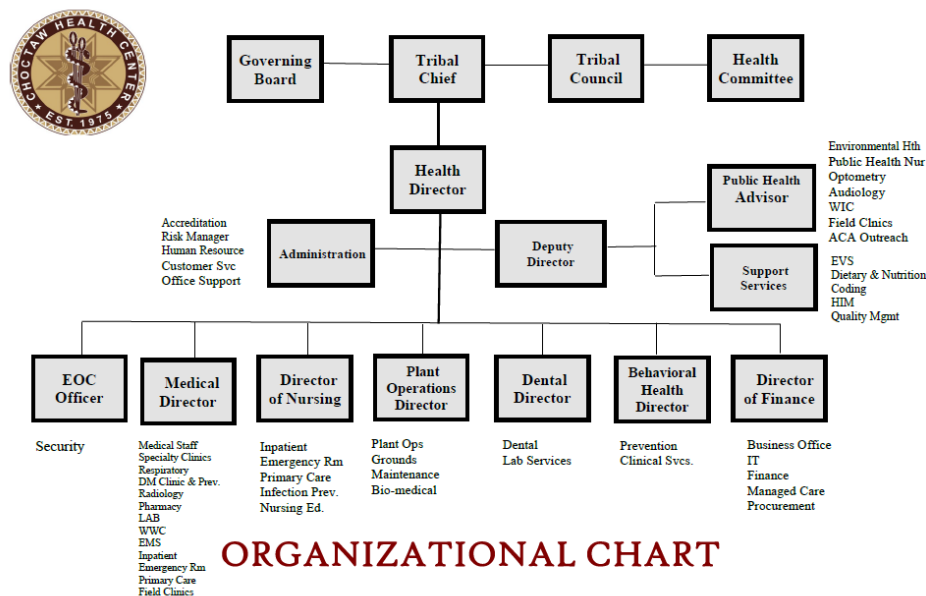


MBCI FACTS

- Tribal enrolled membership exceeds 10,800 individuals
- Tribal government is a democratic form of government: Legislative, Executive, and Judicial.
- Tribe owns and operates a diversified portfolio of manufacturing, service, retail, hospitality and construction enterprises.
- Choctaw language is still spoken fluently in majority of homes.

Organizational Chart

PHS Employees: 13 CHRs 8 Departmental



Services Provided:

Satellite Clinics: BogueChitto, Conehatta and Red Water clinics provide medical health care to outlying communities through the services of a nurse practitioner, licensed practical nurse, clinic clerk and outreach services through community health technicians.

Audiology: hearing screenings and exams by an Audiologist for hearing problems, including hearing screenings by the Audiometric Technician, for children from pre-K through 12th grade and adults.

Optometry: vision services includes a licensed Optometrist for eye exams, diabetic retinopathy exams, and eyewear fittings, adjustments, & minor eyewear repair by the Optometric Technician.

Tuberculosis: surveillance screenings by staff for TB infection, TB disease, and follow-up on all persons exposed to assure appropriate care.

Sexually Transmitted Infection/Disease Control: infection and disease screening, counseling, testing, treatment and contact investigation.

Public Health Nursing & Outreach: personnel participates in programs for the community, including the post-partum home visitation program, health education/awareness activities, special clinics offered to the tribal communities through the CHC, satellite clinics, and other MBCI tribal programs & events.

CHA Population

- Community definition
 - All persons eligible for Indian health services
 - Enrolled MBCI members or members of other federally recognized American Indian and Alaska Native and direct lineal descendants.
 - Living 'on' or 'near' Tribal lands considered as Choctaw Community
 - Past or current direct service users of Choctaw Health Center



Survey Development

- Assistance from partners
 - Mississippi State Department of Health
- Guidance from other survey instruments
 - BRFSS, NHANES, NACCHO, State CHA, EBCI
- Working meetings with Community Health Technicians
 - Recommended and developed questions that are appropriate for and can be easily understood by community members

Data Collection

- Community Health Technicians were trained to conduct the assessments and provided with all materials needed to facilitate survey condition.
- CHT offered surveys at satellite clinics, conducted drives at the CHC hospital, partnered events, or individual noticed promotional signage.
- All assessments were given to the project officer to input into the data file.

Secondary Data Collection

- Stakeholders/Partners
 - Economic Development
 - Resource and Patient Management System (RPMS)
 - Local Law Enforcement
 - Tribal Enrollment

Other data to be added:

- State data
- Mississippi State Department of Health

CHA Training

- Training Day



- CHA Event



Successes

- Public Health Service t-shirt incentives with completion of assessment
- Inform potential client the information gathered will be analyzed for health improvement purposes.
- Assessment is anonymous.
-

Acknowledgements

- NIHB
- Karrie Joseph
- Mississippi State
Department of Health
- CDC Public Health
Associate Program



References

- <http://www.choctawhealthcenter.org>
- <https://www.google.com/search?q=mississippi+band+of+choctaw+indians>
- Mississippi Band of Choctaw Office of Public Information – Tribal Profile
- www.CHOCTAW.org
- Jesse Thomas, P.H. Advisor; jesse.thomas@choctaw.org
- Denise B. John, Public Health Dir.; djohnrn@choctaw.org
- Jessica Pettway, P.H. Associate; jessica.pettway@choctaw.org
- Durnene Farmer, Outreach Dir.; durnene.farmer@choctaw.org
- Sharon Hockett, P.H. Nurse; sharon.hockett@choctaw.org
- Jordon Taylor, Environ. Health; jordon.taylor@choctaw.org

YAKOKI!
Thank you!